



info@sydneygaragedoors.com.au

0421 374 123

## Sydney Garage Doors Smart Camera Setup Guide

### **IMPORTANT NOTE**

Please note this Smart Camera requires an active Wi-Fi network to operate. If your property does not have a Wi-Fi network this camera will not be able to function.

### **REQUIREMENTS**

- Small Phillips head screwdriver
- Wi-Fi network password
- Power to Motor

### **APP DOWNLOAD**

Please download the Smart Life –Smart Living app from the Google Play Store or the Apple App store. You will need to create an account to use this device



Apple

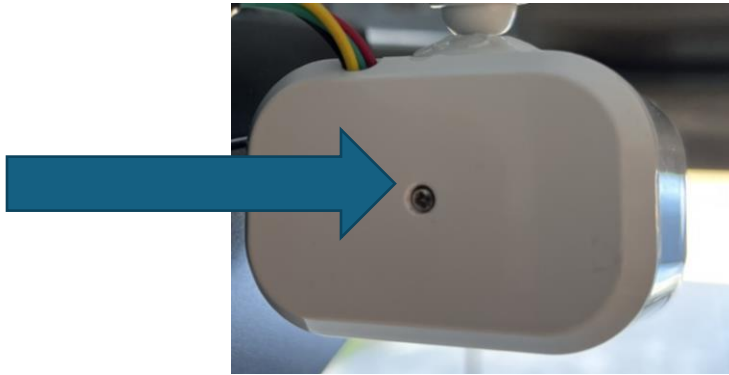
<https://apps.apple.com/au/app/smart-life-smart-living/id1115101477>

Google

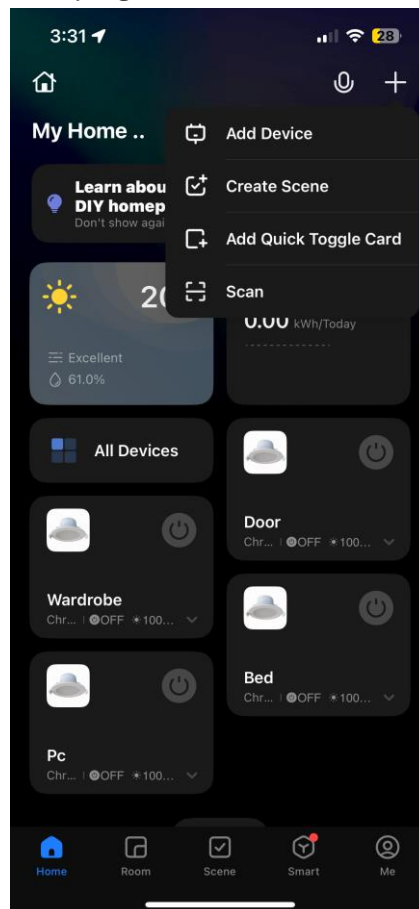
[https://play.google.com/store/apps/details?id=com.tuya.smartlife&hl=en\\_AU&pli=1](https://play.google.com/store/apps/details?id=com.tuya.smartlife&hl=en_AU&pli=1)

## SETUP GUIDE

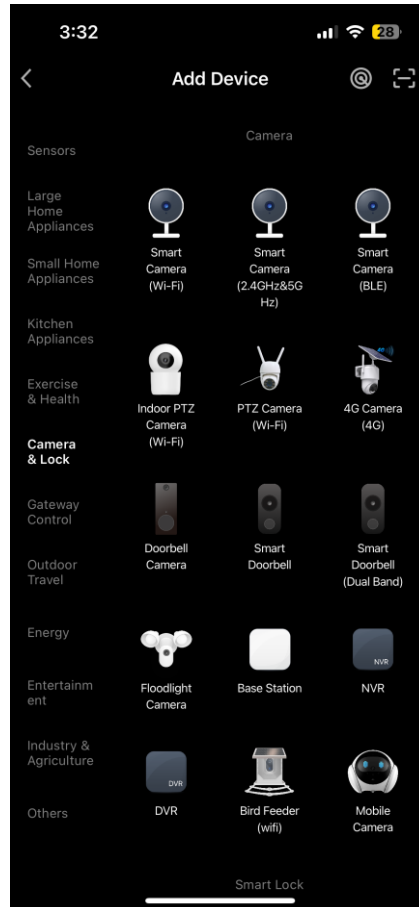
1. Ensure your Garage opener has power to it, this is what will power the Smart Camera.
2. Remove the back panel from the Wi-Fi Camera using a small Phillips head screwdriver



3. Open the Smart Life- Smart Living App on your phone.
4. Press the plus symbol on the top right of the screen and select “Add device”



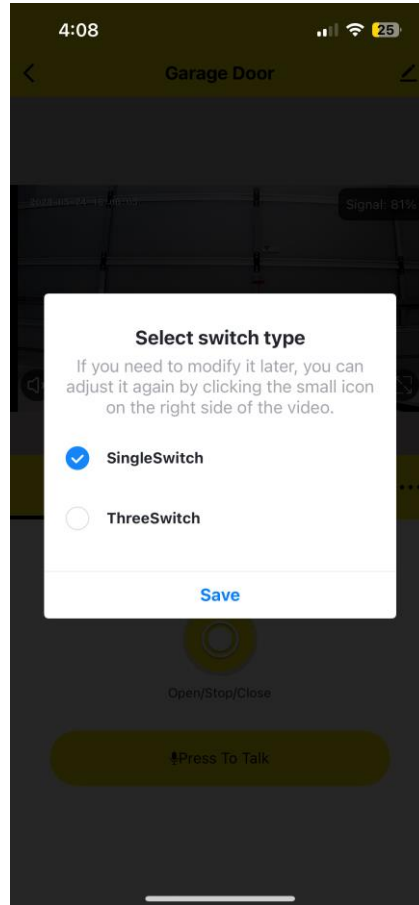
5. Scroll down and on the left hand side of the screen select “Camera & Lock” and then select “Smart Camera (2.4GHz & 5GHz)”



6. Follow the prompts on screen making sure to hold the reset button on the back of the camera in order to activate the devices “Pairing Mode”
7. Enter your Wi-Fi network password when prompted and hit next.
8. You will be presented with a QR code to hold in front of the camera. Please hold this upside down approximately 15-20 cm away from the camera. For best results please ensure your screen brightness is turned all the way up on your device. Once your camera makes a sound please hit the “I heard a Prompt” button on the screen and allow your phone and camera to sync and connect. The light on the camera will turn blue during this process.

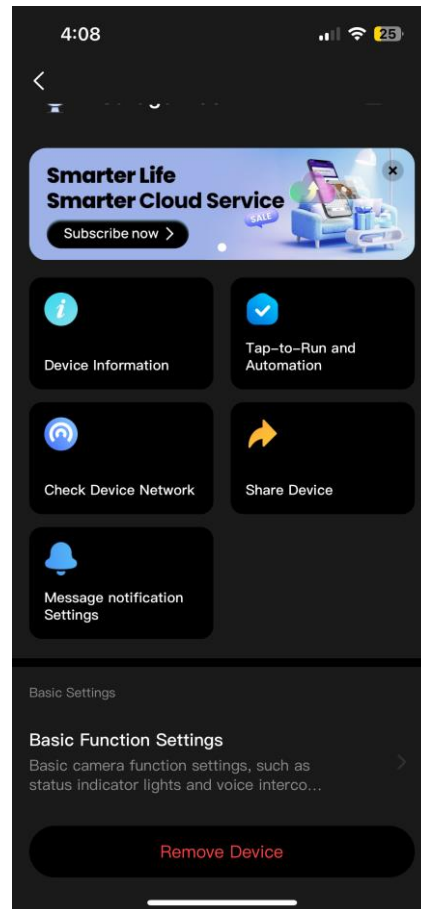


9. Once the Camera is connected you will be asked to give it a name and be brought to the Camera screen. A device update may be available for you to install, please disregard this until the setup is complete.
10. You will be asked to select an option within the app, please select “Single Switch”



11. Now your camera will be able to operate the door! If your camera is displaying upside down, please follow the next steps

12. Press the pencil icon in the top right of your screen and scroll down until you can select “Basic Function Setting”



13. Once in this menu please turn on “Flip Screen”

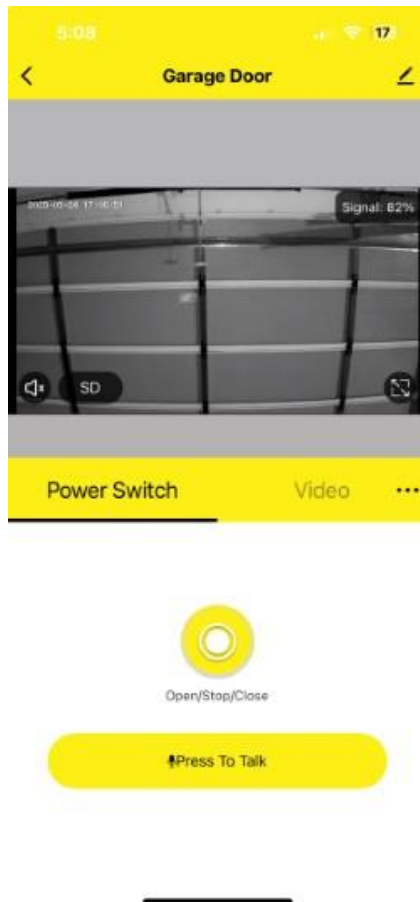
14. Now your Camera will be displayed correctly.



### **IMPORTANT**

Please do not forget to reinstall the back cover once the camera has been paired with your device.

## Using the App

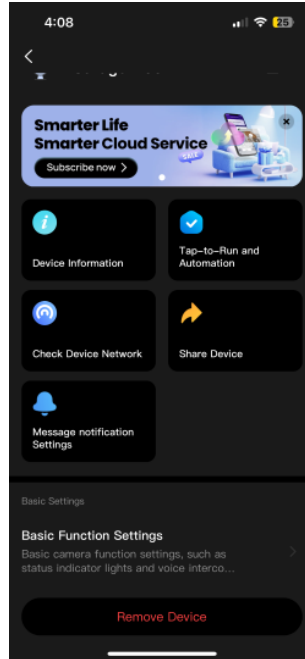
The Smart Camera has multiple functions available for you to use.



1. Power switch  
Allows you to operate your door from your mobile device
2. Press to Talk  
Allows you to use the devices built in speaker to speak through the camera
3. Video  
Allows you to take photos and videos that save straight to your device
4.   
Allows you to activate the built in microphone on the camera to hear inside the room
5. SD/HD  
Allows you to change the quality of the cameras video to your device
6. Fullscreen   
Allows you to view the camera in Fullscreen.

## Sharing

1. To share the device please install the application on the other device.
2. On your device select the camera and then press the pencil on the top right and find the share button



3. Share the link via your preferred method (SMS, Email, Whatsapp, etc.)
4. On the new device open the link and allow it to take you to the Smart Living – Smart Life app
5. Accept the invitation to the device and follow the prompts.

